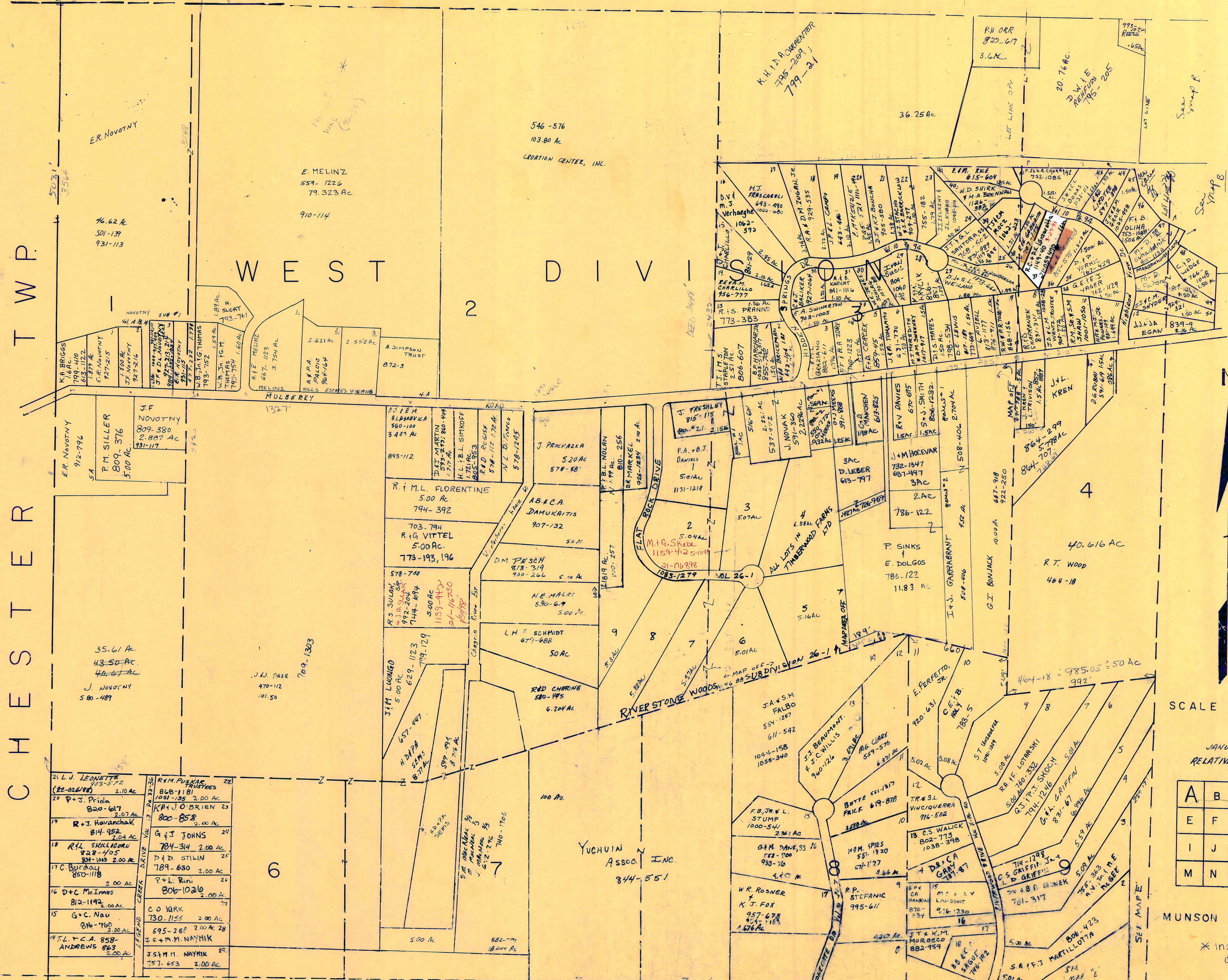




C H E S T E R T W P.

W E S T D I V I S I O N 2



21. L.J. LEONETTE (82-32188) 2.10 AC	22. RYM PUSKAR 818-1181 108-125 2.00 AC
20. P+J. Prida 820-617 2.07 AC	23. K+B. J. O'BRIEN 820-858 2.00 AC
19. R+J. Havanchak 814-952 2.04 AC	24. G+J. JOHNS 784-314 2.00 AC
18. R.L. SKULLICORU 828-405 831-103 2.00 AC	25. D+D. STILIN 789-630 2.00 AC
17. C. BURDADY 850-118 2.00 AC	26. P+L. Rini 806-10210 2.00 AC
16. D+C. McInnes 812-1142 2.00 AC	27. C.O. KIRK 730-1155 2.00 AC
15. G+C. Nau 816-760 2.00 AC	28. S+M.M. NAYMIK 595-268 2.00 AC
14. T.L. + C.A. ANDREWS 858-863 2.00 AC	29. J.S.H.M. NAYMIK 757-653 2.00 AC

All Lots except other wise noted to Jay J. 589-172

✓ indicates survey on FILE with tax map dept.

SCALE 1" = 300'

JANUARY 1, 1998  
RELATIVE REPRESENTATION

A	B	C	D
E	F	G	H
I	J	K	L
M	N	O	P

MUNSON TWP

\* inadequate description

CHARDON TOWNSHIP

THWING ROAD

4 WEST DIVISION

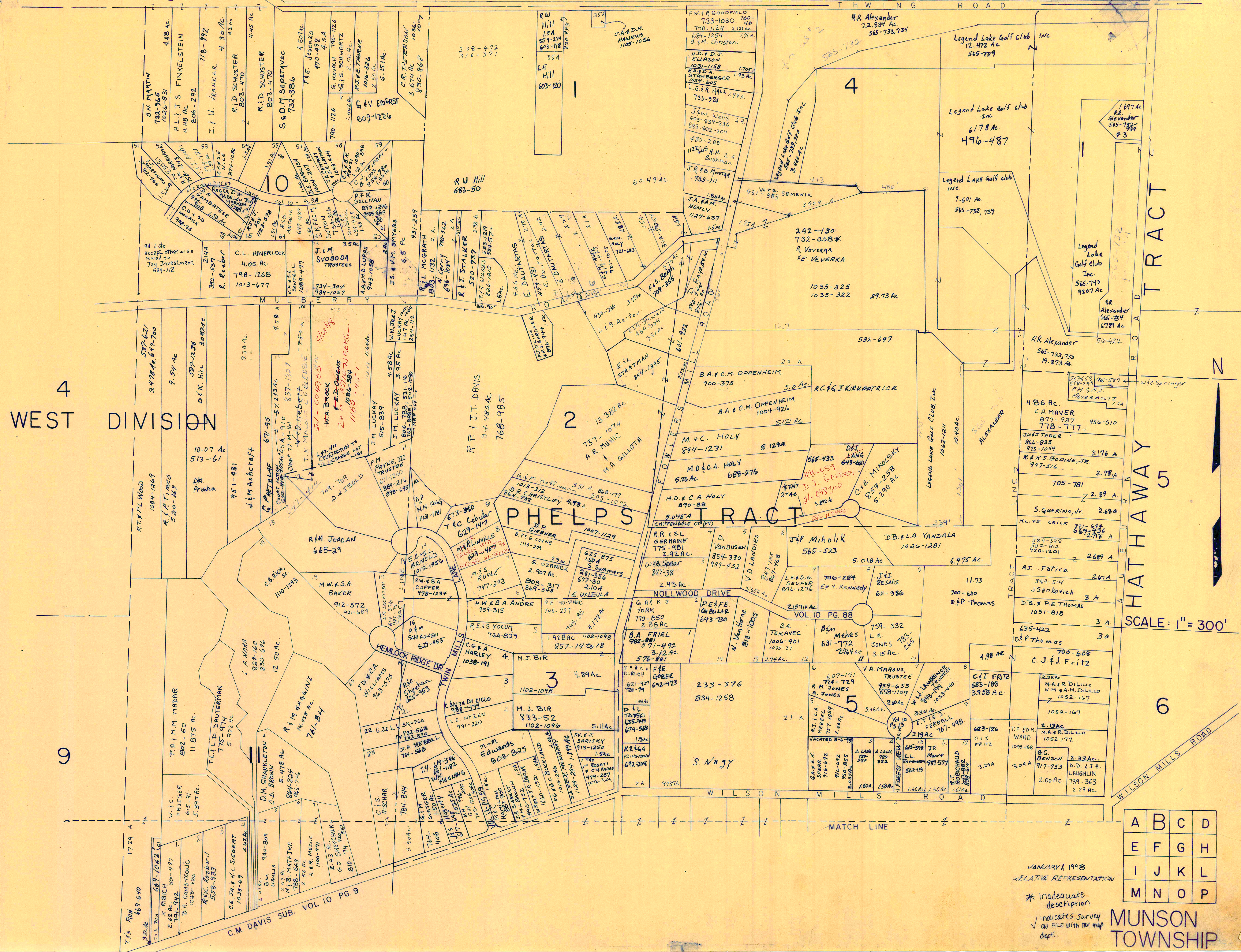
TRACT

5

SCALE: 1" = 300'

6

WILSON MILLS ROAD



A	B	C	D
E	F	G	H
I	J	K	L
M	N	O	P

JANUARY 1, 1998  
REPRESENTATION

\* Inadequate description

✓ indicates survey on file with tax map dept.

MUNSON TOWNSHIP

C.M. DAVIS SUB. VOL 10 PG. 9

755 RW 689-640

1724 A

9

1724 A

9

9

9

9

9

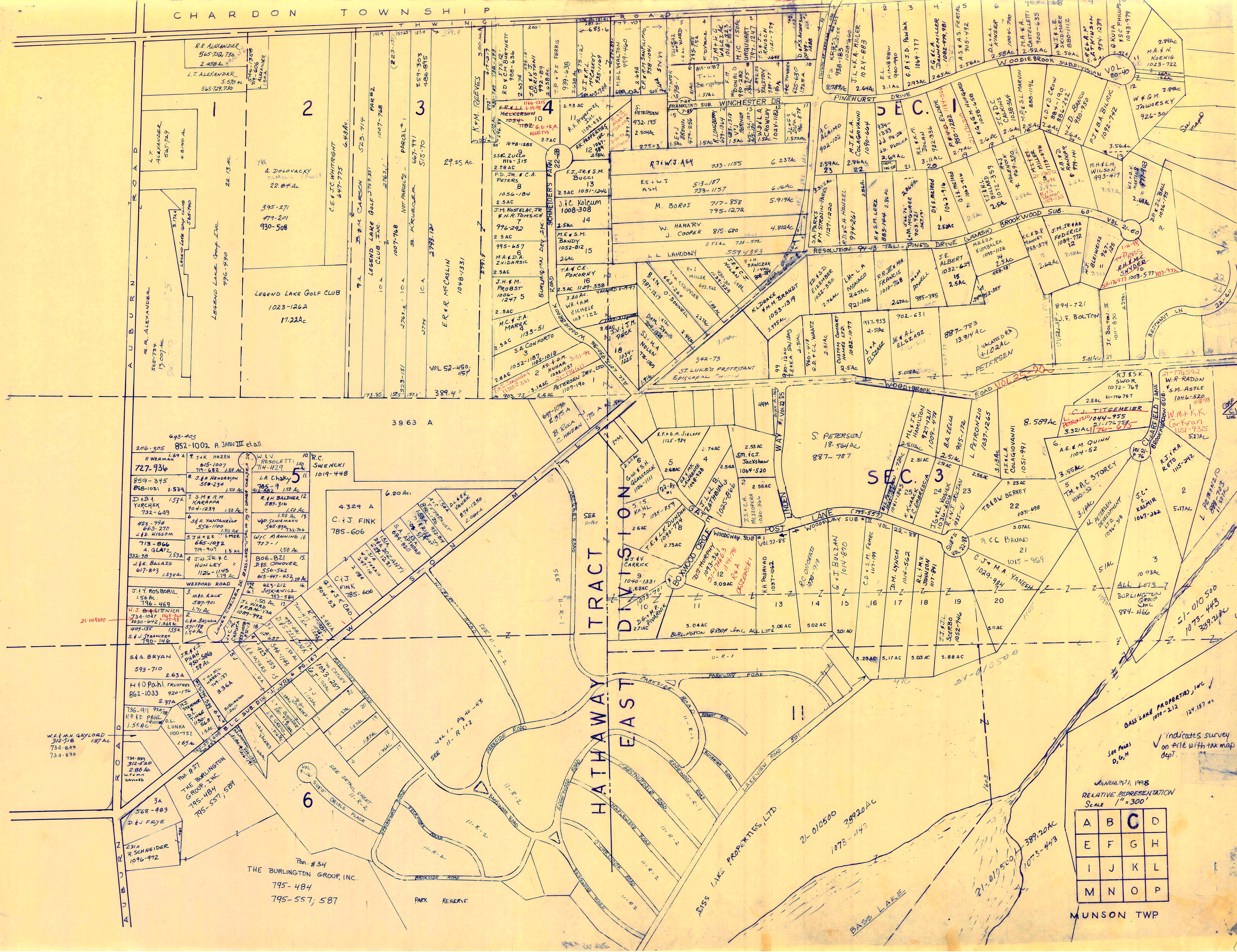
9

9

9

9

CHARDON TOWNSHIP



JANUARY 21, 1998  
RELATIVE REPRESENTATION  
SCALE 1" = 300'

A	B	C	D
E	F	G	H
I	J	K	L
M	N	O	P

MUNSON TWP

Indicates survey on file with tax map dept.  
See Pages D, G, H

Pen #34  
THE BURLINGTON GROUP, INC.  
795-484  
795-557; 587

PARK RESERVE

BASS LAKE PROPERTIES, INC.  
1078-212 124,187 ac

W.E. & M.H. GAYLORD  
312-518  
734-889  
734-895

THE BURLINGTON GROUP, INC.  
795-484  
795-557; 587

H & D PAHL TRUSTEES  
862-1033  
920-176

S & A BRYAN  
593-710  
2.63A

J. & J. ROSBORIL  
1.56 AC.  
796-469

J. & J. ROSBORIL  
1.56 AC.  
796-469

727-936  
859-345  
888-1051

LEGEND LAKE GOLF CLUB  
1023-1262  
17.22AC

THE 4 DOLOVACKY FAMILIES  
22.87A.  
395-271  
779-201  
930-508

RR ALEXANDER  
565-729  
2.958A.  
L.T. ALEXANDER  
5570 N.  
565-729, 730

RR ALEXANDER  
565-729  
2.958A.  
L.T. ALEXANDER  
5570 N.  
565-729, 730

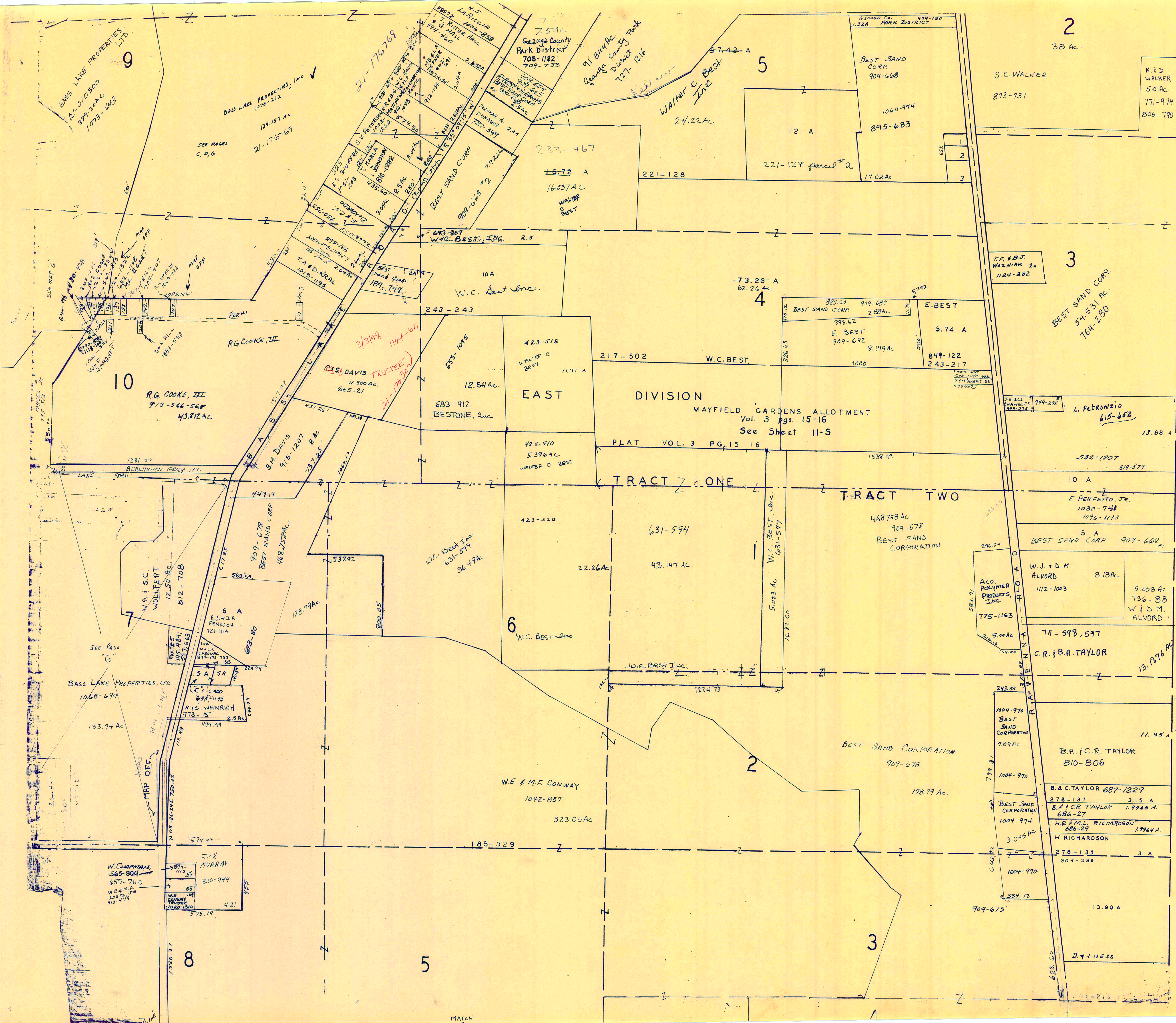
RR ALEXANDER  
565-729  
2.958A.  
L.T. ALEXANDER  
5570 N.  
565-729, 730









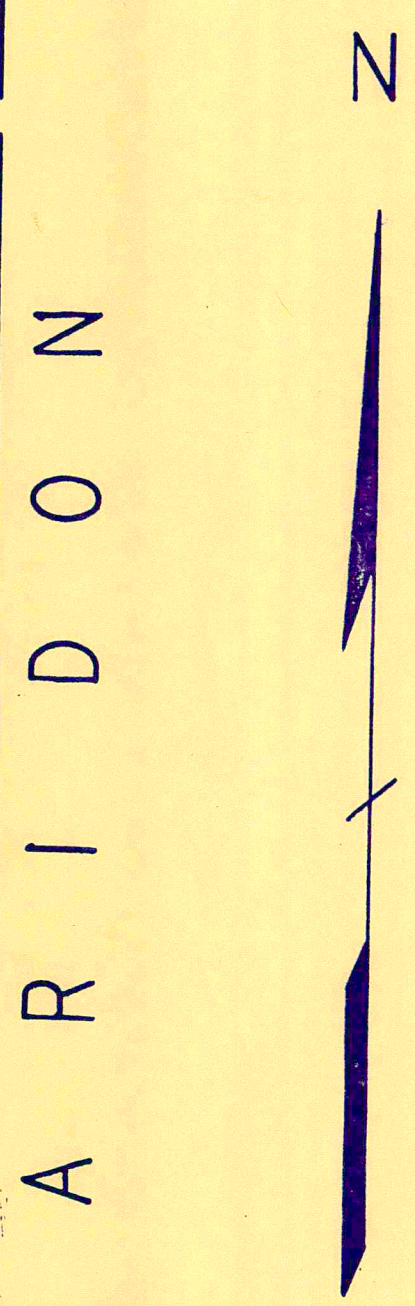


NEW ORIGINAL LOT LINE  
PER PLAT 1870

OLD ORIGINAL LOT LINE  
PER PLATS 1830 & 1846

SEE MUNSON TWP.  
(PROBLEM AREA) FILE

1. Best Sand Corp. 1075-80  
2. W.C. Best, Jr. 736-261  
J.R.A. Childs 736-704



SCALE 1"=300'

JANUARY 1, 1998  
RELATIVE REPRESENTATION

A	B	C	D
E	F	G	H
I	J	K	L
M	N	O	P

MUNSON TWP

\*Inadequate description

SEE MAP G

SEE PAGE C, D, G

SEE PAGE G

SEE PAGE 6

MATCH

2  
38 AC.  
S.C. WALKER  
873-731

K.I.D. WALKER  
50 AC.  
771-974  
806-790

3  
BEST SAND CORP.  
54,531 AC.  
764-280

4  
73-28 A  
62.26 AC.

5  
7.5 AC.  
Geauga County  
Park District  
708-1182  
709-733

6  
W.C. BEST INC.  
631-597

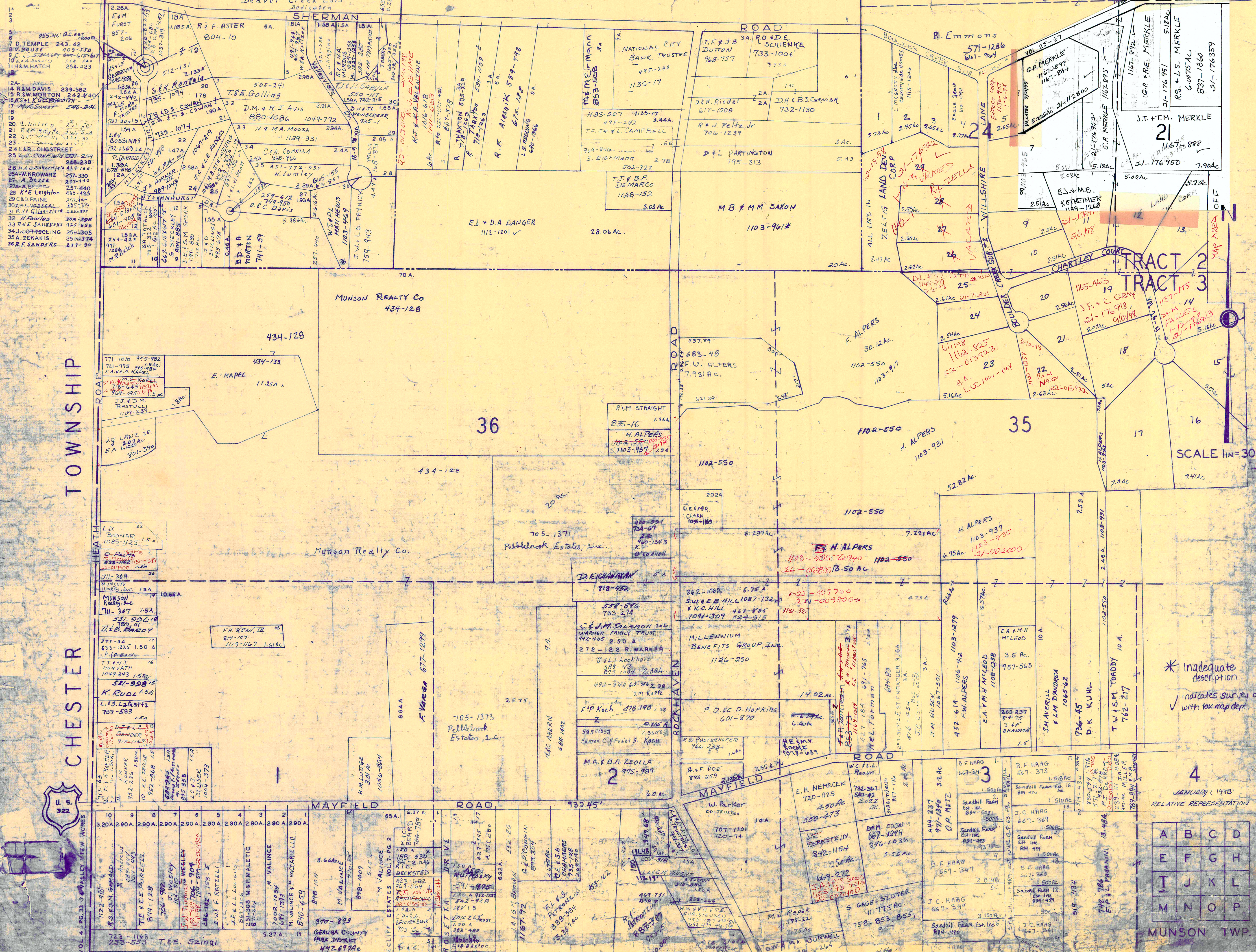
7  
W.C. BEST INC.  
631-597

8  
W.E. & M.F. CONWAY  
1042-857  
323.05 AC.

9  
BASS LAKE PROPERTIES, LTD.  
21-010500  
389,200 AC  
1073-443

10  
R.G. COOKE, III  
913-546-568  
43,812 AC.

CHAMPION TRACT BARBER TRACT



- 12. A. N. ...
- 13. D. Temple 243.42
- 14. R. M. Davis 239.582
- 15. R. W. Morton 242.440
- 16. K. L. K. ...
- 17. M. S. ...
- 18. ...
- 19. ...
- 20. L. Nelson 251.201
- 21. R. M. ...
- 22. ...
- 23. ...
- 24. L. R. Longstreet
- 25. ...
- 26. H. A. ...
- 27. A. Bessie 257.330
- 28. R. E. ...
- 29. C. & P. ...
- 30. ...
- 31. R. E. ...
- 32. ...
- 33. R. E. ...
- 34. ...
- 35. A. ...
- 36. R. F. ...

CHESTER TOWNSHIP

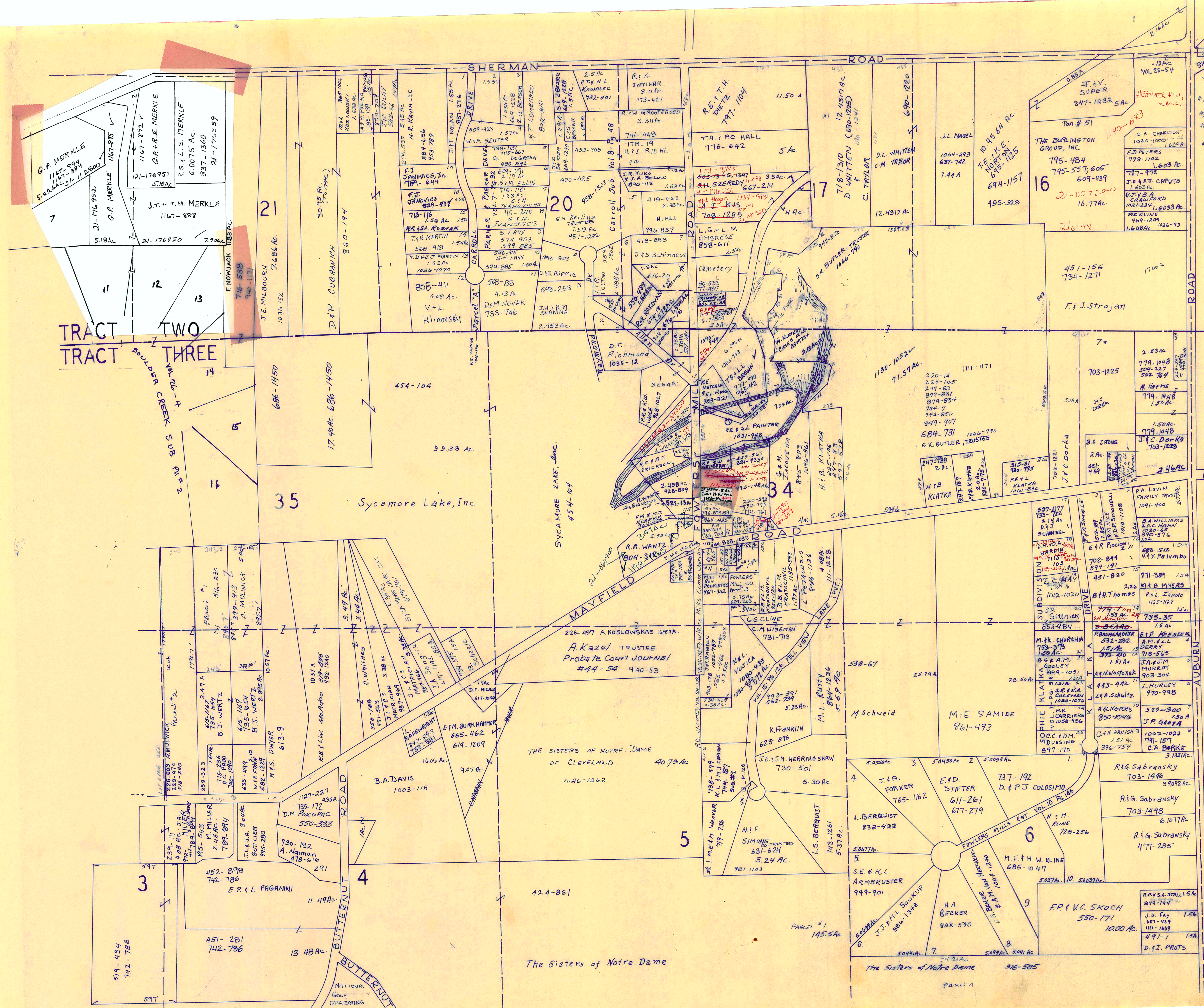


\* Inadequate description  
✓ indicates survey on file with tax map dept.

JANUARY 1, 1998  
RELATIVE REPRESENTATION

A	B	C	D
E	F	G	H
I	J	K	L
M	N	O	P

MUNSON TWP.



7-09 VOL 25-54  
SHERMAN RD VOL 25-54  
VOL 25-54  
F. J. MILLER, SR.  
#1 - L.F.B. MUSI - 816-969 lot 34  
#2 - A.U. LOCHAN 988-305 lot 34  
#3 - R.C. F.B.J. ERICKSON 16134  
741-1210  
#4 - D.F.B.A. KELLEY 1053-821-249 1039

HEATHER HILL, Inc.  
D.K. CHARLTON 1020-1000 1.624 AC  
E.J. PETERS 978-1102 1.603 AC  
787-472  
J.R. & T. CAPUTO 1.603 AC  
V.J. & B.A. SCRAWFORD 1022-234 1.6033 AC  
M. KLINE 969-1209 1.608 AC 1036-93

THE BURLINGTON GROUP, INC.  
795-484  
795-557, 605  
609-439  
16.77 AC  
21-007300  
21698

220-14  
225-105  
247-63  
879-831  
934-7  
942-850  
949-907  
684-731  
1066-790  
G.K. BUTLER, TRUSTEE

703-1225  
M. HOFFIS  
779-1048  
1.50 AC  
1.50 AC  
779-1048  
J.C. DORRIS  
703-1225

2.53 AC  
779-1048  
309-327  
309-764  
M. HOFFIS  
779-1048  
1.50 AC  
1.50 AC  
779-1048  
J.C. DORRIS  
703-1225

2.46 AC  
2 AC  
681-469  
J.F. COOK  
703-1221  
J.F. COOK

597-1177  
735-722  
814 AC  
D.J. SCHWABEL  
E.R. PACCIONI  
702-844  
894-191  
SUBDIVISION MAY  
Sittnick  
854-984  
M.H. CHURCHIA  
733-373  
1.60 AC  
G.E.A.M.  
COOLEY  
894-1051  
K.LATKA  
894-1051  
L.HURLEY  
970-998  
R.L. KORDS  
850-1046  
J.P. GAZTA  
1002-1022  
C.R. HANISH  
396-754  
3.1331 AC

520-300  
1.50 A  
J.P. GAZTA  
791-157  
C.A. BURKE  
3.1331 AC

R.G. Sabransky  
703-1496  
3.9092 AC  
R.G. Sabransky  
703-1498  
6.1077 AC  
R.G. Sabransky  
477-285

R.P. & S.A. STILLER  
879-194  
J.D. FAY  
687-429  
111-1939  
491-1  
1.56  
D.J. PROTS

INDICATES SURVEY ON FILE WITH TAX MAP DEPT.

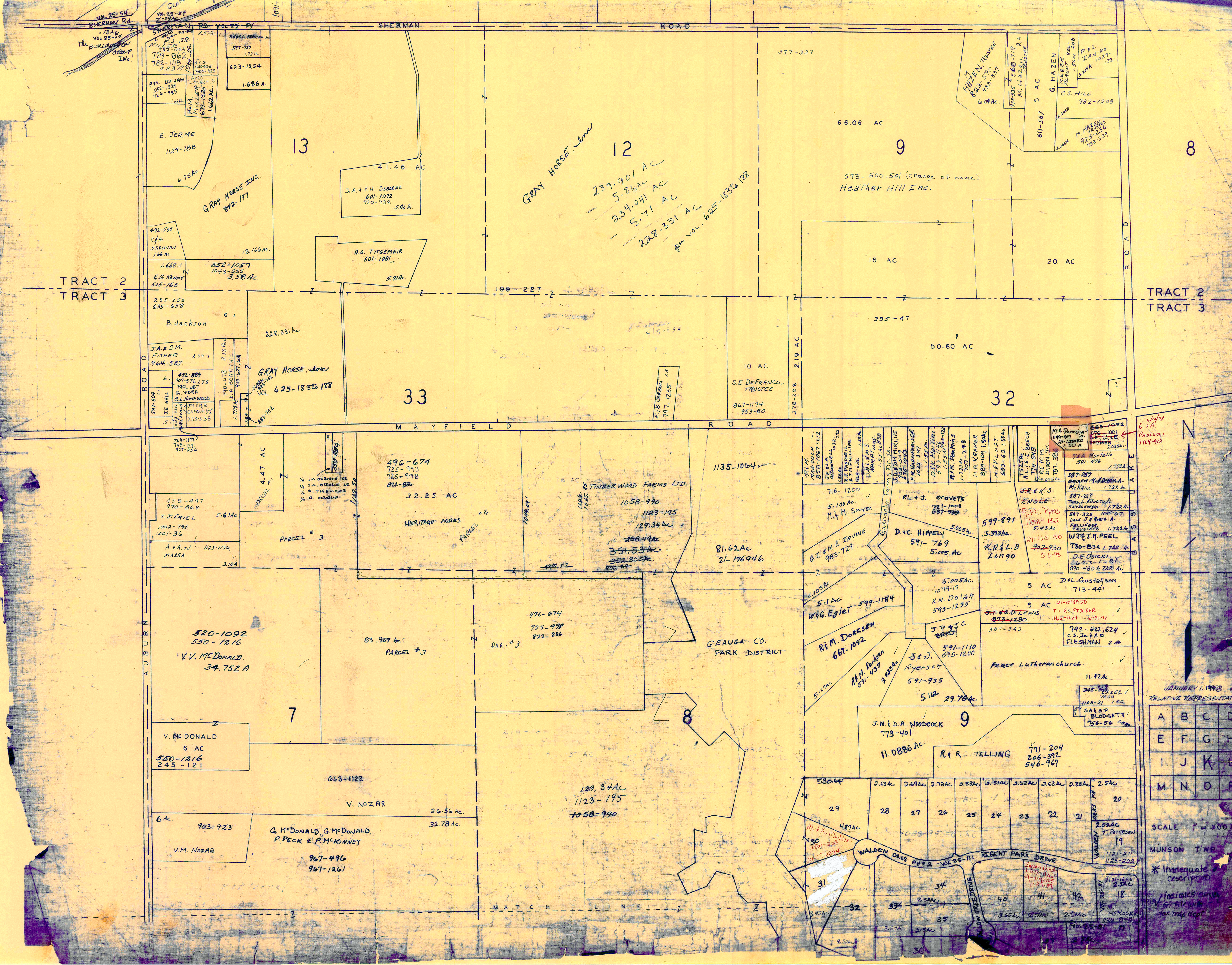
JANUARY 1, 1998

RELATIVE REPRESENTATION

A	B	C	D
E	F	G	H
I	J	K	L
M	N	O	P

MUNSON TWP

\* Inadequate description



N  
 JANUARY 1, 1998  
 RELATIVE REPRESENTATION  
 A B C D  
 E F G H  
 I J K L  
 M N O P  
 SCALE 1" = 300 FT.  
 MUNSON TWP  
 \* Inadequate description indicates survey on file with tax map dept

TRACT 2  
TRACT 3

TRACT 2  
TRACT 3

AUBURN ROAD

SHERMAN ROAD

MAYFIELD ROAD

MATCH LINE

ROAD

ROAD

CUM

1091

1091

1091

1091

1091

1091

1091

1091

1091

1091

1091

1091

1091

1091

1091

1091

1091

1091

1091

1091

1091

1091

1091

1091

1091

1091

1091

1091

1091

1091

1091

1091

1091

1091

1091

1091

1091

1091

1091

1091

1091

1091

1091

1091

1091

1091

1091

1091

1091

1091

1091

1091

1091

1091

1091

1091

1091

1091

1091

1091

1091

1091

1091

1091

1091

1091

1091

1091

1091

1091

1091

1091

1091

1091

1091

1091

1091

1091

1091

1091

1091

1091

1091

1091

1091

1091

1091

1091

1091

1091

1091

1091

1091

1091

1091

1091

1091

1091

1091

1091

1091

1091

1091

1091

1091

1091

1091

1091

1091

1091

1091

1091

1091

1091

1091

1091

1091

1091

1091

1091

1091

1091

1091

1091

1091

1091

1091

1091

1091

1091

1091

1091

1091

1091

1091

1091

1091

1091

1091

1091

1091

1091

1091

1091

1091

1091

1091

1091

1091

1091

1091

1091

1091

1091

1091

1091

1091

1091

1091

1091

1091

1091

1091

1091

1091

1091

1091

1091

1091

1091

1091

1091

1091

1091

1091

1091

1091

1091

1091

1091

1091

1091

1091

1091

1091

1091

1091

1091

1091

1091

1091

1091

1091

1091

1091

1091

1091

1091

1091

1091

1091

1091

1091

1091

1091

1091

1091

1091

1091

1091

1091

1091

1091

1091

1091

1091

1091

1091

1091

1091

1091

1091

1091

1091

1091

1091

1091

1091

1091

1091

1091

1091

1091

1091

1091

1091

1091

1091

1091

1091

1091

1091

1091

1091

1091

1091

1091

1091

1091

1091

1091

1091

1091

1091

1091

1091

1091

1091

1091

1091

1091

1091

1091

1091

1091

1091

1091

1091

1091

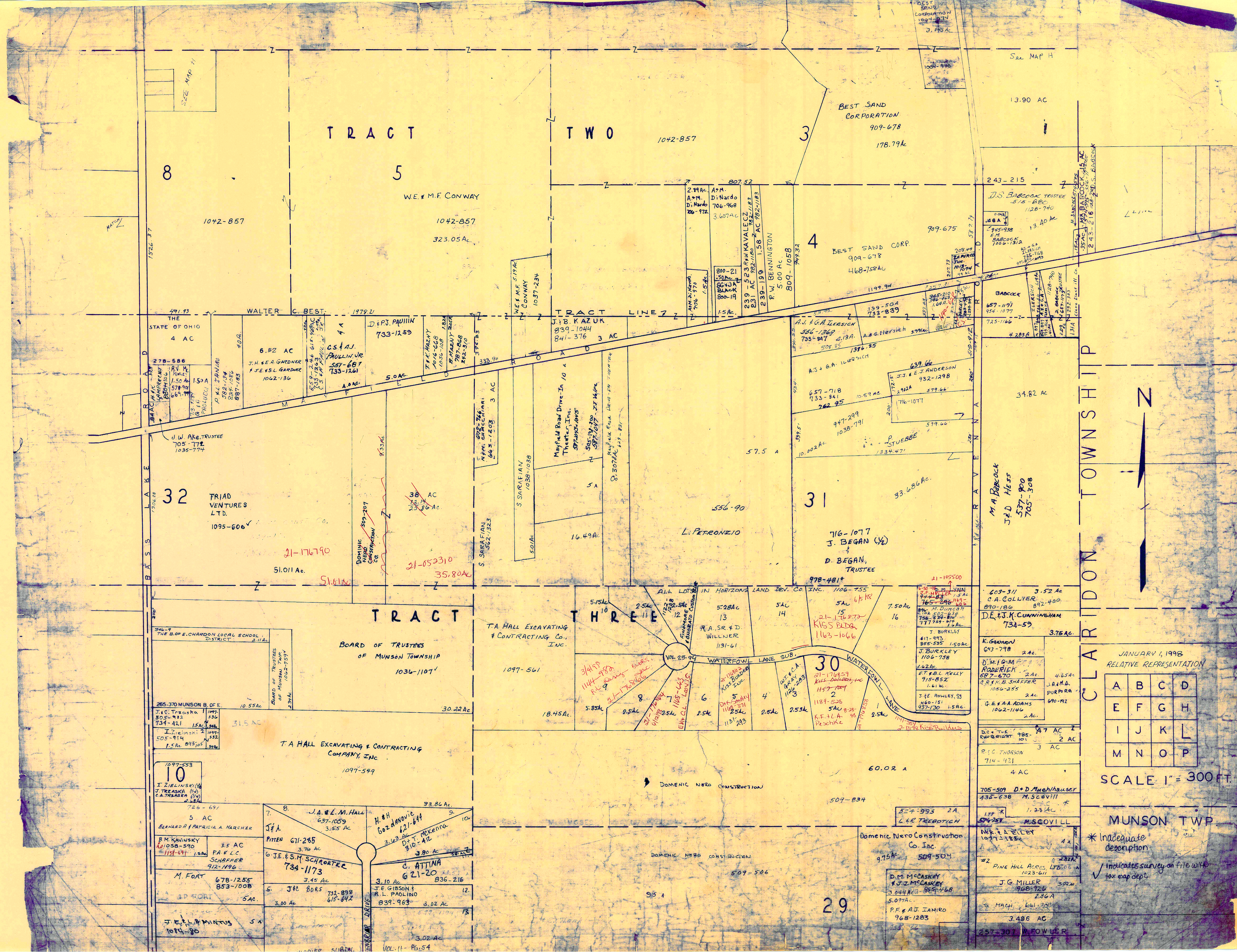
1091

1091

1091

1091

1091



CLARIDON TOWNSHIP

JANUARY 1, 1998  
RELATIVE REPRESENTATION

A	B	C	D
E	F	G	H
I	J	K	L
M	N	O	P

SCALE 1" = 300 FT.

MUNSON TWP

\* Inadequate description  
/ indicates survey on file with tax map dept.

TRACT TWO

WE & M.F. CONWAY  
1042-857  
323.05 AC

TRACT FIVE  
WATER C. BEST  
1978

STATE OF OHIO  
4 AC  
278-588  
J.W. AKE TRUSTEE  
705-772  
1035-774

32 TRIAD VENTURES LTD.  
1095-606

38 AC  
21-176790  
51.011 AC  
21-052310  
35.80 AC

TRACT THREE  
BOARD OF TRUSTEES OF MUNSON TOWNSHIP  
1036-1107

T.A. HALL EXCAVATING & CONTRACTING COMPANY, INC.  
1097-561

T.A. HALL EXCAVATING & CONTRACTING COMPANY, INC.  
1097-549

TRACT ONE  
J.A. & L.M. HALL  
637-1059  
3.555 AC  
H.H. BOZARD  
621-611  
3.123 AC  
D.F. McENERY  
810-412  
3.80 AC  
C. ATTINA  
621-20  
836-216  
J.F. GIBSON  
R.L. PAOLINO  
839-963  
3.02 AC  
J.E. & L. MINTUS  
1084-80  
5 AC

TRACT TWO

1042-857  
323.05 AC

TRACT THREE  
J.B. KAZUK  
839-1044  
841-376  
3 AC

57.5 AC  
L. PETRONZIO

31  
716-1077  
J. BEGAN (1/2)  
D. BEGAN, TRUSTEE  
978-481\*

TRACT THREE  
T.A. HALL EXCAVATING & CONTRACTING CO. INC.  
1097-561

TRACT THREE  
WATERFOWL LANE SUB.  
VOL. 25-94

TRACT THREE  
WATERFOWL LANE  
VOL. 25-94

TRACT THREE  
D.M. McCASKEY  
R.J. McCASKEY  
3.044 AC  
959-468  
5.077 AC  
P.F. & A.J. IANIRO  
968-1283

TRACT TWO

1042-857  
323.05 AC

TRACT THREE  
J.B. KAZUK  
839-1044  
841-376  
3 AC

57.5 AC  
L. PETRONZIO

31  
716-1077  
J. BEGAN (1/2)  
D. BEGAN, TRUSTEE  
978-481\*

TRACT THREE  
T.A. HALL EXCAVATING & CONTRACTING CO. INC.  
1097-561

TRACT THREE  
WATERFOWL LANE SUB.  
VOL. 25-94

TRACT THREE  
WATERFOWL LANE  
VOL. 25-94

TRACT THREE  
D.M. McCASKEY  
R.J. McCASKEY  
3.044 AC  
959-468  
5.077 AC  
P.F. & A.J. IANIRO  
968-1283

TRACT TWO

1042-857  
323.05 AC

TRACT THREE  
J.B. KAZUK  
839-1044  
841-376  
3 AC

57.5 AC  
L. PETRONZIO

31  
716-1077  
J. BEGAN (1/2)  
D. BEGAN, TRUSTEE  
978-481\*

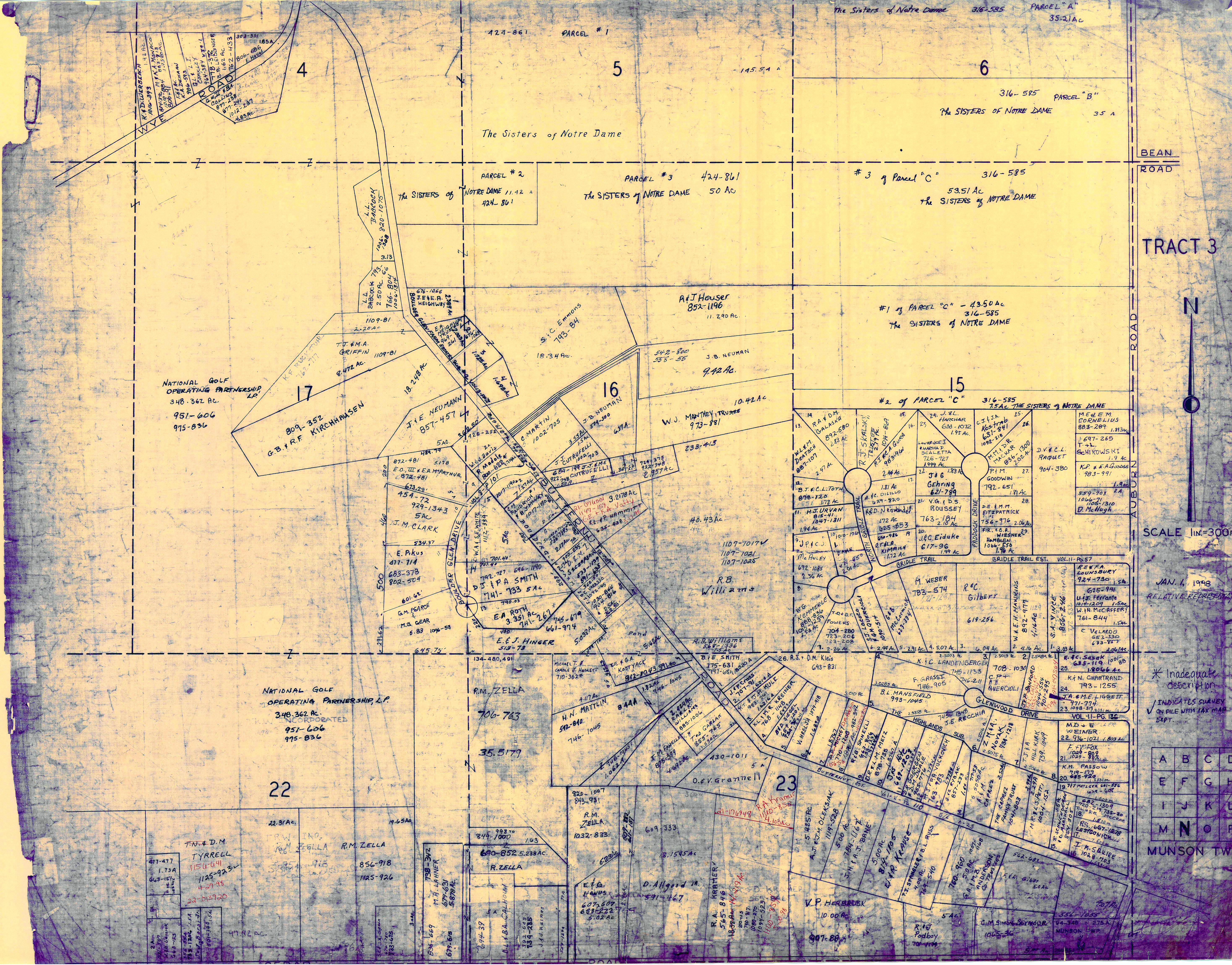
TRACT THREE  
T.A. HALL EXCAVATING & CONTRACTING CO. INC.  
1097-561

TRACT THREE  
WATERFOWL LANE SUB.  
VOL. 25-94

TRACT THREE  
WATERFOWL LANE  
VOL. 25-94

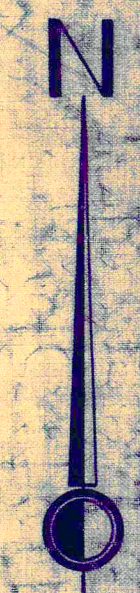
TRACT THREE  
D.M. McCASKEY  
R.J. McCASKEY  
3.044 AC  
959-468  
5.077 AC  
P.F. & A.J. IANIRO  
968-1283





BEAN ROAD

TRACT 3



SCALE 1"=300 FT.

JAN. 1, 1948  
RELATIVE REPRESENTATION

\* Inadequate description  
✓ INDICATES SURVEY ON FILE WITH TAX MAP DEPT.

A	B	C	D
E	F	G	H
I	J	K	L
M	N	O	P

MUNSON TWP.

NATIONAL GOLF OPERATING PARTNERSHIP, L.P.  
348-362 AC.  
951-606  
975-836

NATIONAL GOLF OPERATING PARTNERSHIP, L.P.  
348-362 AC.  
INCORPORATED  
951-606  
975-836

T.N. & D.M. TYRRELL  
150-041  
1125-923  
1125-923  
22-02920

R.M. ZELLA  
856-918  
1125-926

R.M. ZELLA  
1032-835

D. Allgood Jr.  
591-467

V.P. HERBERICH  
10-00 AC.  
907-86

G.M. SIMON-SYMONS  
1025-36

MUNSON TWP.



TRACT THREE

TRACT AUBURN



✓ Indicates survey on file with tax map dept.

\* inadequate description  
 JAN. 1, 1998  
 RELATIVE REPRESENTATION

A	B	C	D
E	F	G	H
I	J	K	L
M	N	O	P

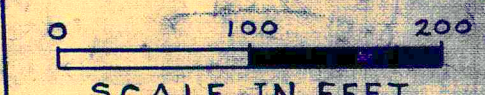
SCALE 1" = 300 FT  
 MUNSON T & E

See Page 01





\* Inadequate description  
 ✓ Indicates survey on file with tax map dept.



MUNSON  
 BASS LAKE INVEST  
 SUBDIVISIONS  
 SUBLOTS 1-253 VOL. 1-P  
 SUBLOTS 256-284 " 1-P

JAN. 1, 1998  
 RELATIVE REPRESENTATION

11-R-1



WILSON MILLS ROAD 60'

WILBERT ROAD

VOL 6-225 (M)

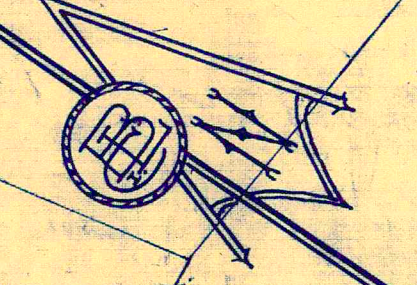
WILSON MILLS ROAD 60'

BASSWOOD ROAD 30'

WILSON MILLS ROAD 60'

ALL LOT NUMBERS FOLLOWED BY "J" = BASS LAKE COMM. INC.  
SUB. DIV. VOL 6 - PG. 167

All Parcels Not Having Name Thereon Stand In Name Of Bass Lake Comm. Inc.



JAN 1, 1998  
RELATIVE REPRESENTATION

SCALE IN FEET  
0 100 200

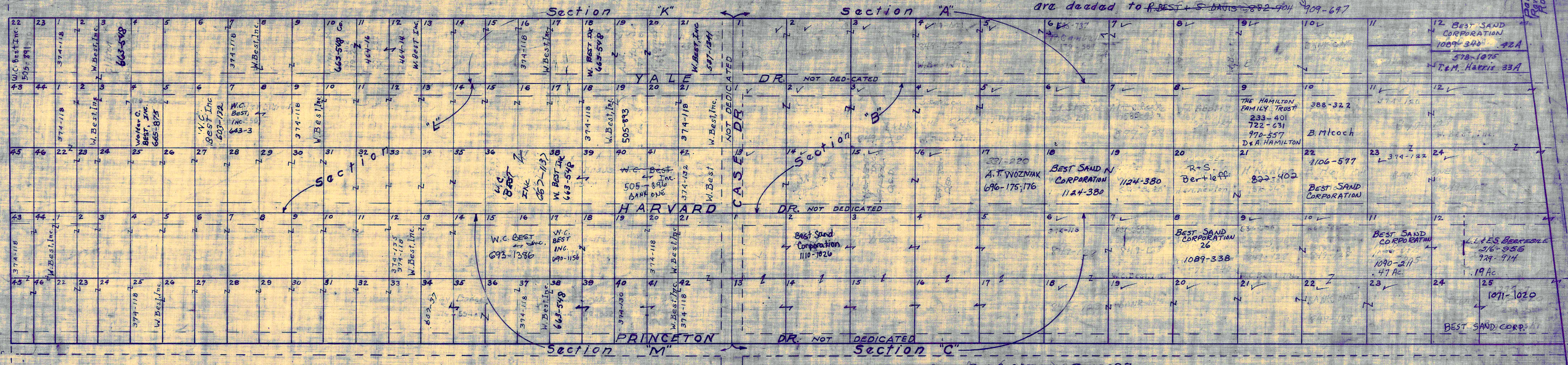
MUNSON  
BASS LAKE INVEST  
SUBDIVISIONS  
ENBLOTS 1-253 VOL 1-P40  
SUBLOTS 256-284 " 1-P42  
SUBLOTS 158-162 " 2-P3

Indicates Survey on File with tax map dept.

\* Inadequate description

MAYFIELD GARDENS - Subdivision No 1 Vol. 3 pgs. 15 & 16 (Plats)

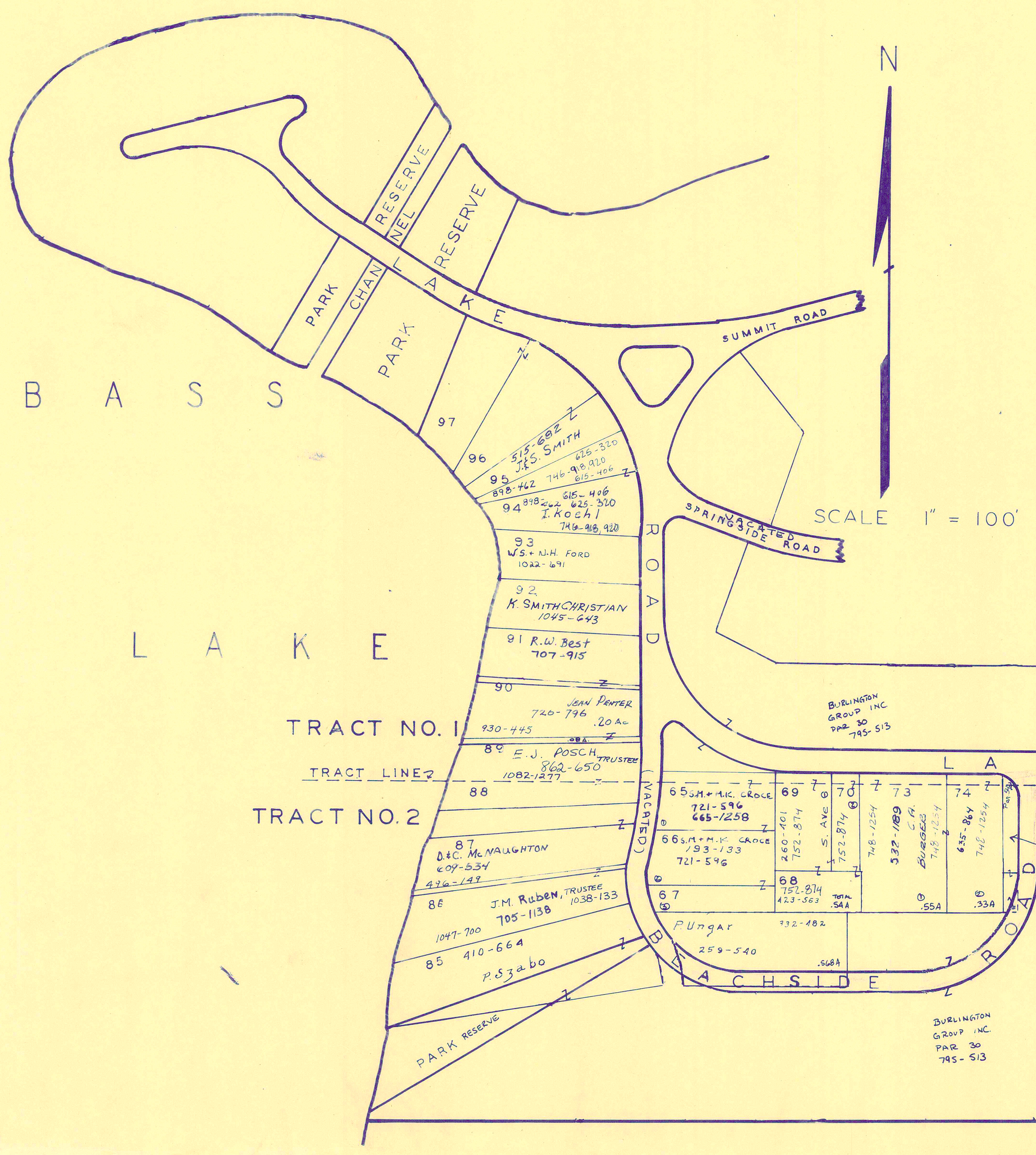
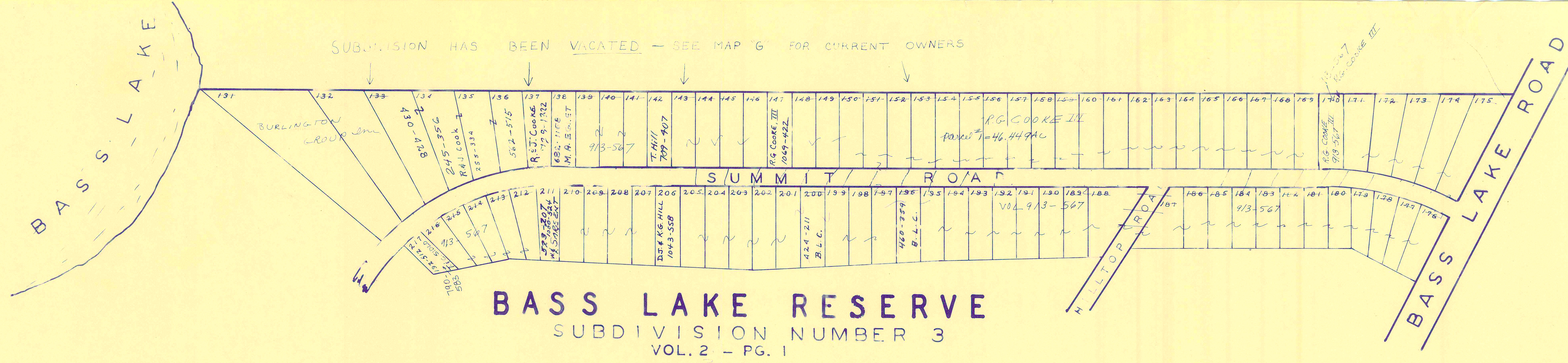
Note: All lots not named to BEST SAND CORP. are deeded to R. BEST & S. DAVIS 882-904 909-697 Scale 1 inch = 100 feet



WALTER C. BEST INC.			WALTER C. BEST			WALTER C. BEST			WALTER C. BEST		
SEC. K	SEC. L	SEC. M	SEC. K	SEC. L	SEC. M	SEC. A	SEC. B	SEC. C	SEC. A	SEC. B	SEC. C
LOT VOL. & PAGE	LOT VOL. & PAGE	LOT VOL. & PAGE	LOT VOL. & PAGE	LOT VOL. & PAGE	LOT VOL. & PAGE	LOT VOL. & PAGE	LOT VOL. & PAGE	LOT VOL. & PAGE	LOT VOL. & PAGE	LOT VOL. & PAGE	LOT VOL. & PAGE
232 434	232 434	232 434			718 690 1156	232 434	232 434	6 232 434		11 232 443	
259 488								12 232 443		12 232 443	
232 434								19 232 443		23 232 444	
								21 232 443			
								22 255 57			
								23 232 434			

\* Inadequate description  
 ✓ Indicates survey on file with tax map dept.

RELATIVE REPRESENTATION  
 JAN. 1, 1998



THE BASS LAKE RESERVE CO'S SUBDIVISION NO. 2 AND RESUBDIVISION OF SUBDIVISION NO. 1 VOL. 1 - PG. 64-65-67

Plan #30  
THE BURLINGTON GROUP, INC.  
795-513, 547  
(inaccurate Cambryanna)

\* Inadequate description  
INDICATES SURVEY ON FILE WITH TAX MAP DEPT.

JANUARY 1, 1998  
RELATIVE REPRESENTATION

8PPI 1888 WMM20M